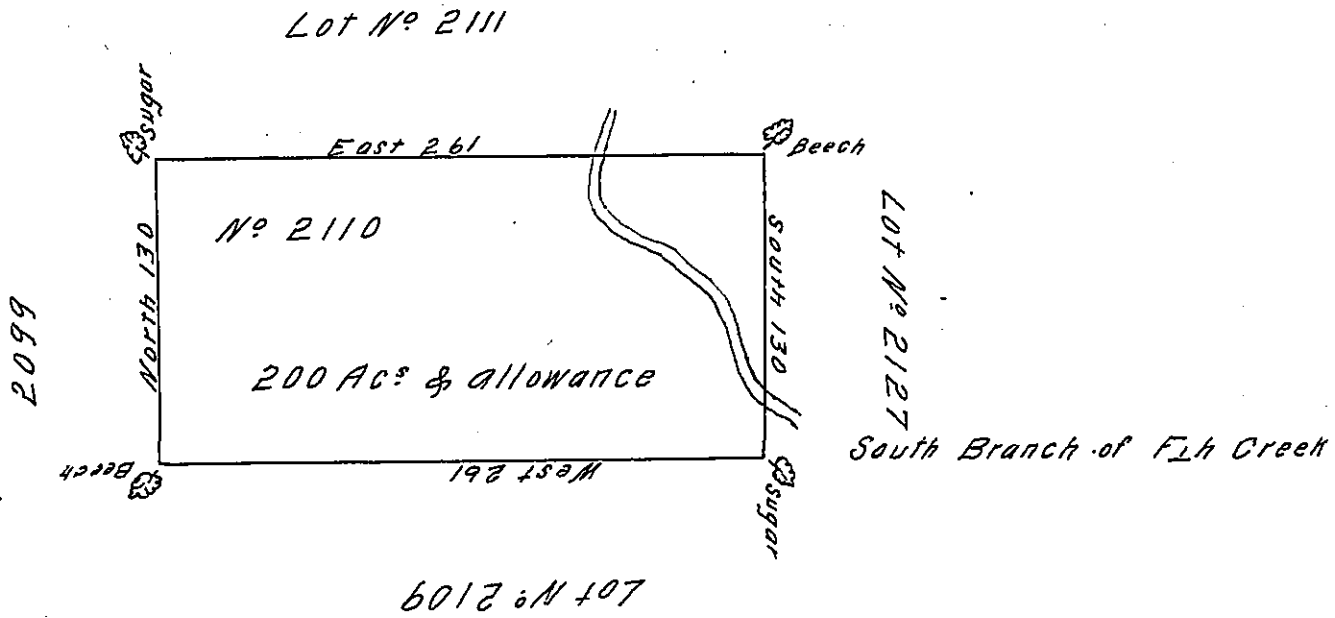


drawn 16 May
1807 for Elizabeth
widow of Christian
Eberman.



In pursuance of an act of General Assembly
of the State of Pennsylvania passed the 24 day of February
1785 entitled "An act for directing the mode of distributing
the donation lands promised to the troops of this Common-
wealth" And by order of the Surveyor General with the ap-
probation of the Hon^{ble} Executive Council, I have surveyed
on the 16th day of August 1785 the above described tract
of two hundred acres and allowance of Six Pct for Roads &c.
N^o MMCX situate in district N^o 10 on the west side of
Alleghany river in the County of Westmoreland.

To John Lukens Esquire S. G. } D. Watts
Erie County

IN TESTIMONY that the above is a copy of the original remaining on file in
the Department of Internal Affairs of Pennsylvania, made
conformably to an Act of Assembly approved the 16th day of
February, 1833, I have hereunto set my Hand and caused
the Seal of said Department to be affixed at Harrisburg,
this Nineteenth day of March 1908

Henry Howell
Secretary of Internal Affairs.